



Setup Utility Guide **OPOS Driver**

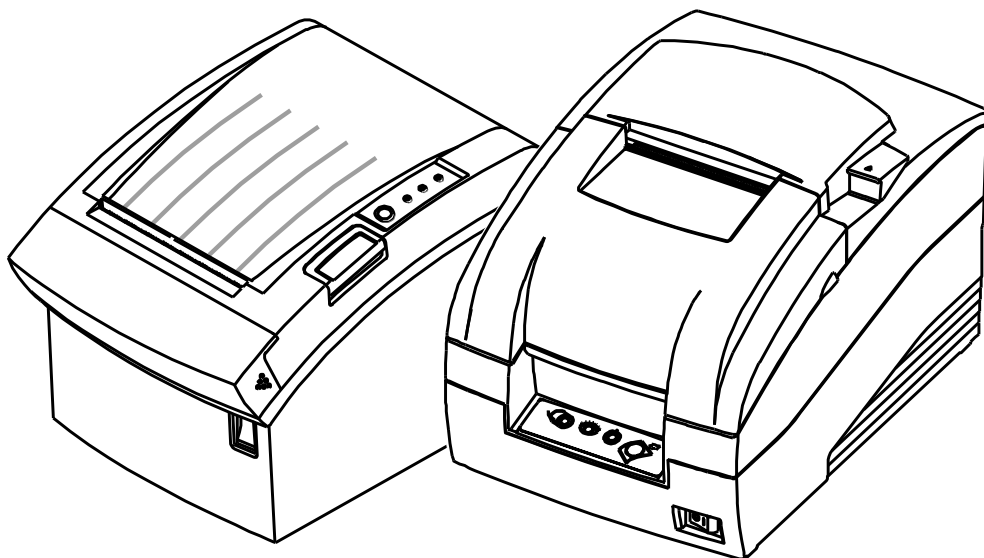
Rev. 1.03

GDP-220

GTP-250

GTP-250II

GTP-250III



■ Table of Contents

1. Instruction3

2. SENOR Tech OPOS Driver Setup4

 2-1 POSPrinter Registration4

 2-2 CashDrawer Registration.....7

1. Instruction

This is a manual about how to register and configure POS Printer produced by SENOR Tech with SENOR Tech OPOS Driver.

Further Source

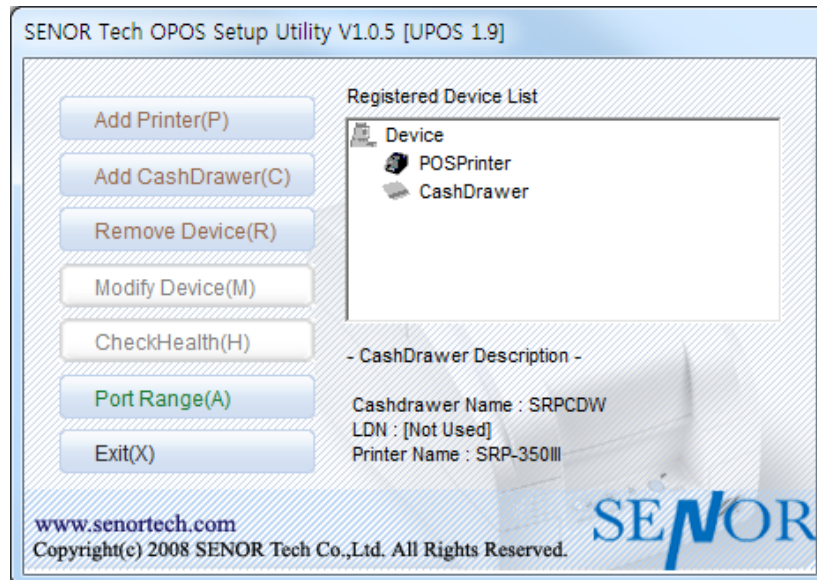
OLE for Retail POS committee available from <http://monroecs.com/opos.htm>

Driver Update from <http://www.senortech.com>

2. SENOR Tech OPOS Driver Setup

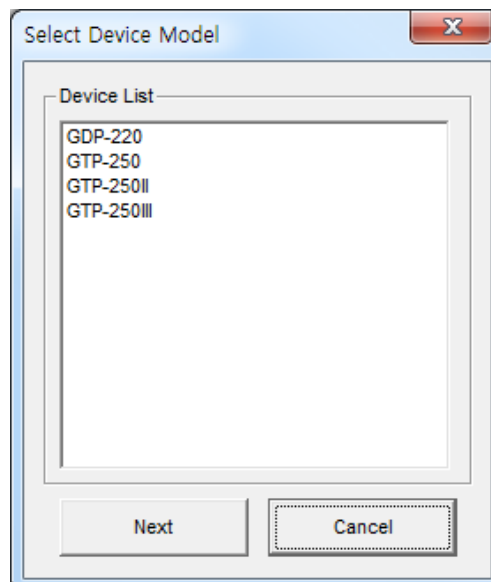
After SENOR Tech OPOS Driver installation execute “SENOR OPOS Setup Utility” to register or configure POSPrinter, “SENOR OPOS Setup Utility” that is located in “

Start>Program>SENOR OPOS Driver>SENOR OPOS Setup Utility”

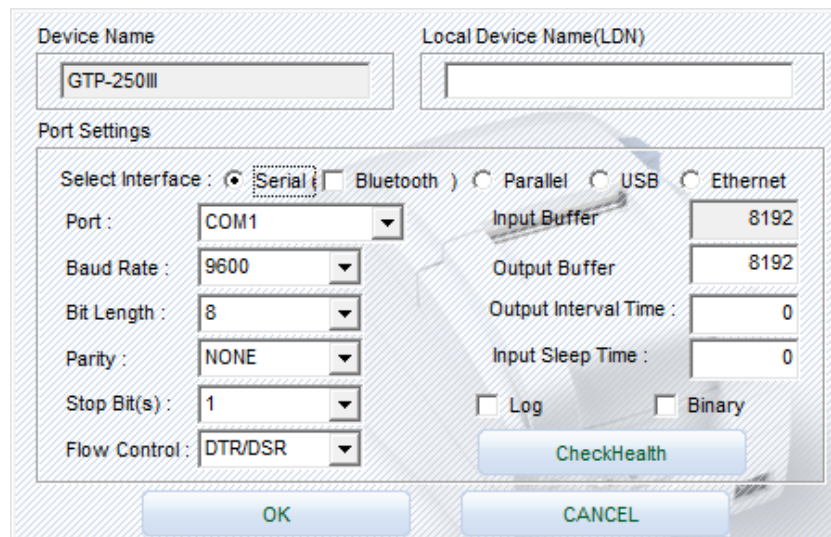


2-1 POSPrinter Registration

1) Click “Add Printer” button



2) Select printer model and Click “NEXT” button.



3) Set the communication environment of the connected printer and click “OK” button.

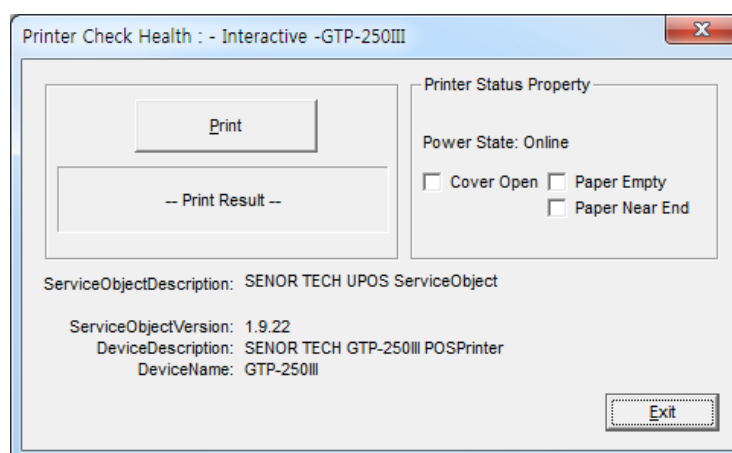
*** Please check the 'Log' and 'Binary' checkbox when it's necessary only. Otherwise Hard Drive capacity will be lack of containing other files due to the 'Log' and 'PRN' checkbox function.**

*** OPOS log files can be found in the following locations:**

- Windows XP: C:\Program Files\OPOS\BIXOLON OPOS DRIVER\Log
- VISTA and later - user account
: C:\users\<accounts name>\AppData(hidden folder)\Local\Virtual-Store\Program Files\OPOS\BIXOLON OPOS DRIVER\Log
- VISTA and later - administrator account
: C:\Program Files\OPOS\BIXOLON OPOS DRIVER\Log

4) Click “Checkhealth” to see if the printer operates properly

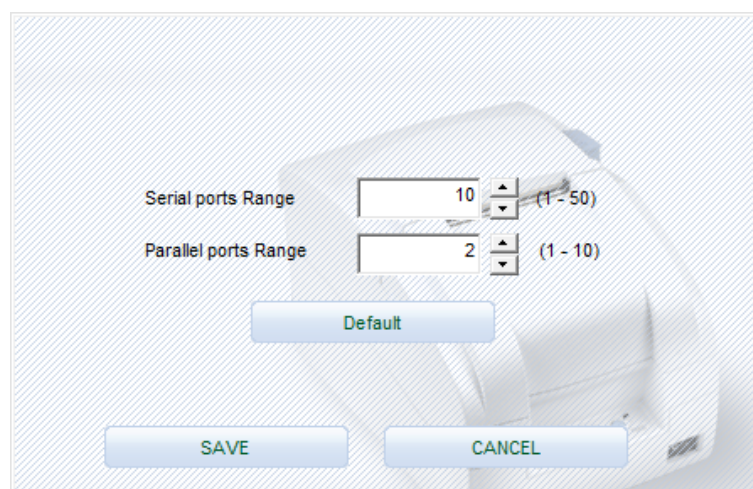
<POSPrinter CheckHealth Dialog >



Item	Description
Logical Device Name (LDN) [Edit Box]	New Logical Device Names can be modified by typing the name in the box and then pressing the OK button.
Port [Drop List Combo Box]	Port setting.
Bits per second [Drop List Combo Box]	Baud rate setting for the COM port. This setting will be restricted according to the limitations of the device. If using parallel port, this control can not set and reference.
But Length [Drop List Combo Box]	Bit length setting for the COM port. This setting will be restricted according to the limitations of the device. If using parallel port, this control can not set and reference.
Parity Bits [Drop List Combo Box]	Parity setting for the COM port. This setting will be restricted according to the limitations of the device. If using parallel port, this control can not set and reference.
Stop Bits [Drop List Combo Box]	Stop bit setting for the COM port. This setting will be restricted according to the limitations of the device. If using parallel port, this control can not set and reference.
Handshake [Drop List Combo Box]	Handshake setting for the COM port. This setting will be restricted according to the limitations of the device. If using parallel port, this control can not set and reference.
Input Buffer (byte) [Edit Box]	Input buffer size for the COM port. Valid size must be from 32 to 8192. If using parallel port, this control can not set and reference.
Output Buffer (byte) [Edit Box]	Output buffer size for the COM and LPT port. Valid size must be from 32 to 4096.
Output Interval Time (msec) [Edit Box]	Sets the interval between retries (amount of time passed to the Win 32 API Sleep function) if there has been an error during output. Valid time value must be from 0 to 9999. For a slave device, this is disabled.
Input Sleep Time (msec) [Edit Box]	Sets an interval to be set (amount of time passed to the Win32 API Sleep function : not assistance) to cause the Device to sleep during input Valid time value must be from 0 to 99. For a slave device, this is disabled.
CheckHealth	Invoke the CheckHealth method for this device with Level = OPOS_CH_INTERACTIVE. This method inform status of printer.
Apply or OK [Button]	Save current settings and exit.
Cancel[Button]	Discard current settings and exit.

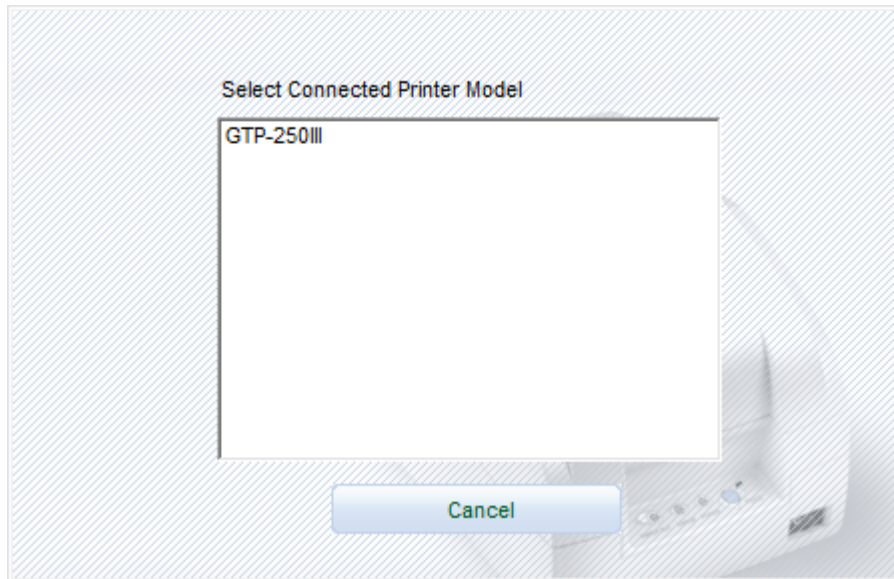
* if the system has more ports than the default port range of SENOR Tech OPOS Driver Setup Utility, click “Port Range” button and set the port range.

* If you select the port that the system doesn’t have, the device won’t operate.

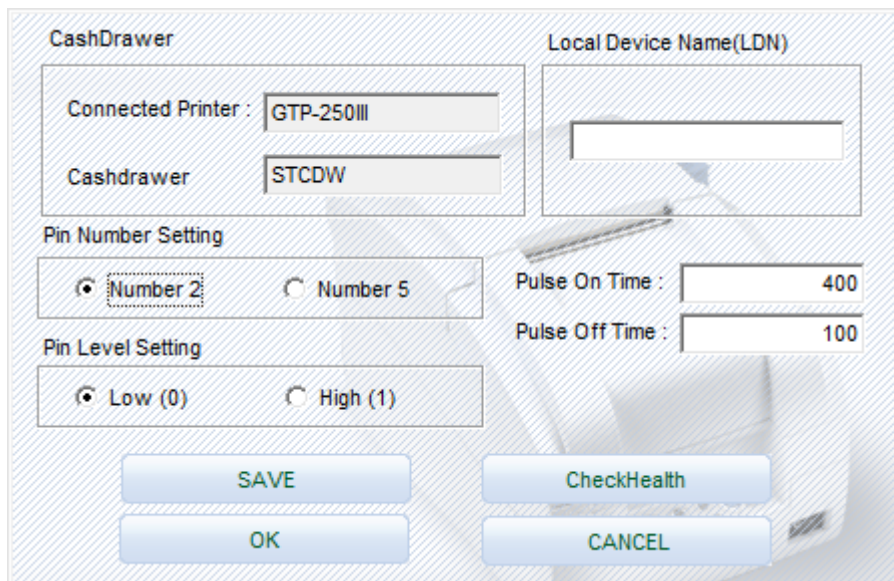


2-2 CashDrawer Registration

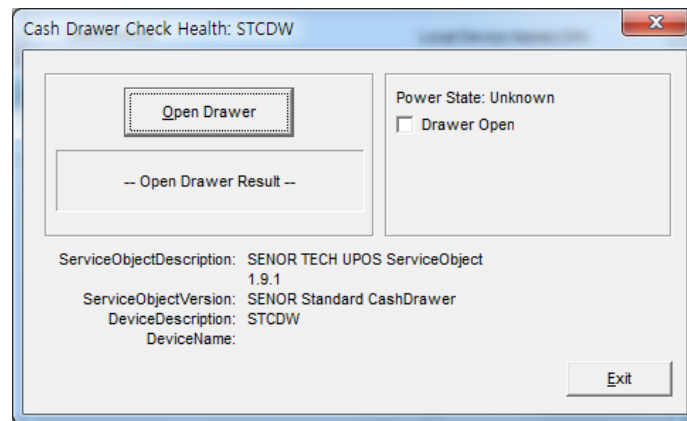
- 1) Click "Add CashDrawer" button
- 2) Select the printer connected to Cashdrawer among the registered printers.



- 3) Set up CashDrawer and click "SAVE" or "OK" button.



- 4) Click "Checkhealth" to see if the printer operates properly.
<CashDrawer CheckHealth Dialog >



Item	Description
Pin Number	Pin Number of drawer kick connector outputting signals. (Default Value : Pin 2)
Open Level	This shows the symbol(Low/High) status when the drawer is closed. The status (Low.High) can be chosen from Open Level Frame. (Default Value : Low)
Pulse ON time	Pulse ON Time outputting the specified pin in Connector Pin No.(Default Value : 100[msec])
Pulse OFF time	Pulse OFF Time outputting the specified pin in Connector Pin No. The unit is millisecond. (Default Value : 400[msec])
CheckHealth	Invoke the CheckHealth method for this device with Level = OPOS_CH_INTERACTIVE. This method inform status of cashdrawer.